

# CERTIFICATE OF LOCATION OF GOVERNMENT CORNER

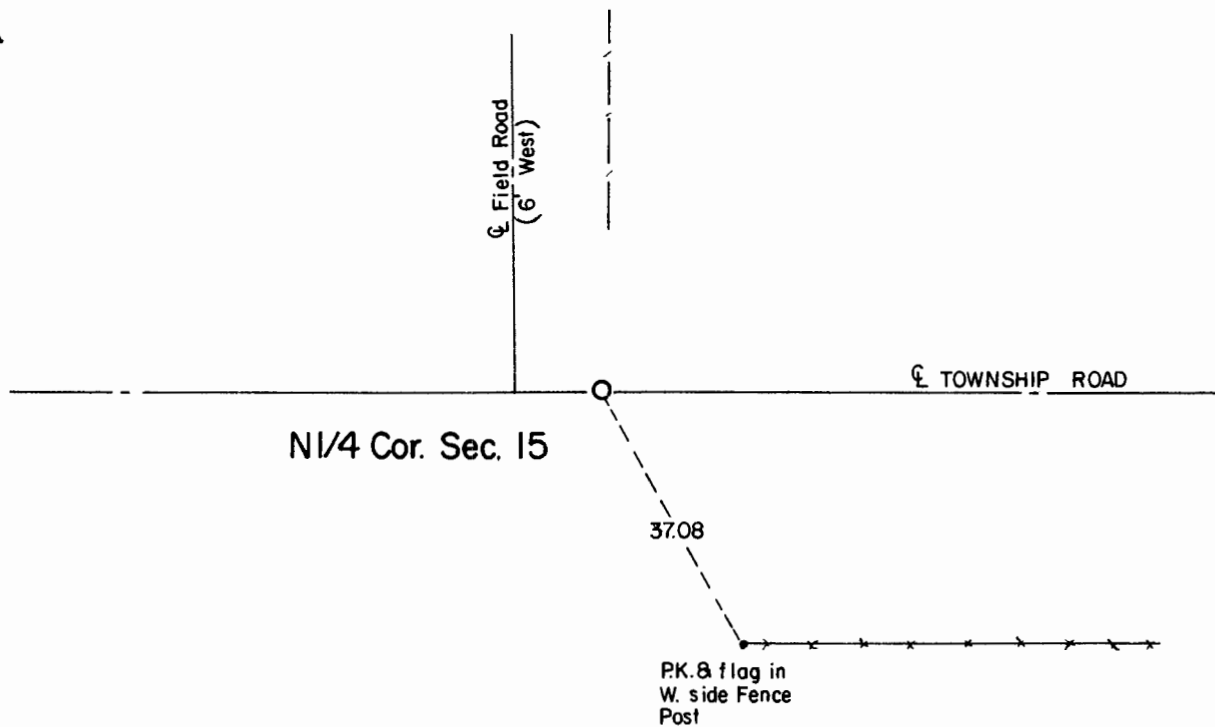
**North Quarter** Corner of Section **15** , Township **108** , Range **41** 5th P.M.

STATE OF MINNESOTA, County of Murray.

**Statement:** Aug. 17, 1989 - Found a 14 inch x 14 inch x 9 inch stone.  
Placed a Mn/DOT Cast Iron Monument.



## SKETCH OF REFERENCE TIES



Statement of evidence relative to this corner location is on the back of page.

I hereby certify that this document and the data contained herein was prepared by me or under my direct supervision and that I am a duly Registered Land Surveyor under the laws of the State of Minnesota.

  
Duane A. Bonnema

Nov 6, 1989  
Date

Minnesota Registration No. 14895

OFFICE OF THE COUNTY RECORDER  
COUNTY OF MURRAY **NOV 15 1989**

I hereby certify that this document was filed in the County Recorder's office at \_\_\_M. on the \_\_\_ day of \_\_\_\_\_ A.D., 19\_\_

County Recorder James V. Johnson  
By \_\_\_\_\_, Deputy

DOCUMENT NO. \_\_\_\_\_

North Quarter Cor. Sec. 15 T108N-R41W

*Statement:*

- September 1861*      *Original Government Land Office Surveyor L. G. M. Fletcher records in his field notes, "built mound with trench pits, charred stake per instructions."*
- Aug. 17, 1989*      *Duane A. Bonnema, LS Reg. No. 14895, found a 14 inch x 14 inch x 9 inch stone 3.5 feet below the road surface with a 3 inch x 2 inch x 6 inch red clay brick directly below the stone. He also found pieces of wood on the North side of the brick. The natural ground surface could not be determined. A Minnesota Department of Transportation Cast Iron Monument was placed at the Corner.*